



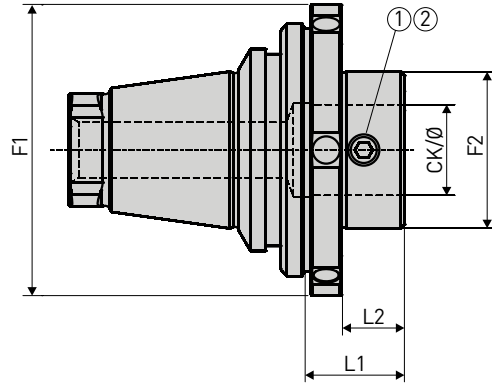
BORING TOOLS FOR THE WTO QUICKFLEX® TOOLING SYSTEM

BIG KAISER boring tools for turning machines – the new QuickFlex® adapters make it possible

WTO QuickFlex® adapter with BIG KAISER tool connection

The adapters for the QuickFlex® quick change tooling system are available in eight different executions and enable the use of BIG KAISER boring tools in the sizes CKB1 up to CKB4 on turning machines. This guarantees gapless and highly precise machining of cross bores on turning machines in the range from \varnothing 0.4 to 74 mm.

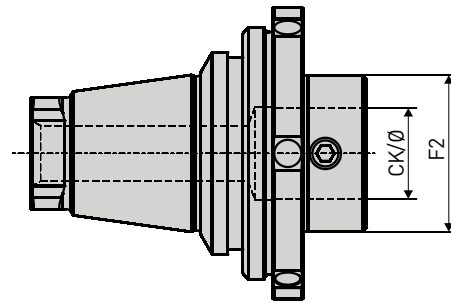
Adapters for BIG KAISER



Size	Order No.	Type	QuickFlex® Adapter					Spare Parts		
			CK/Ø	F1	F2	L1	L2	Screw	① Wrench	②
ER-25QF	470.721	325125CK1	CKB1/11	49	19	15.5	8.5	690.431	690.801	
	470.723	325125CK3	CKB3/18	49	31	19.5	12.5	690.433	690.803	
ER-32QF	470.731	325132CK1	CKB1/11	58	19	15.5	8.5	690.431	690.801	
	470.733	325132CK3	CKB3/18	58	31	19.5	12.5	690.433	690.803	
ER-40QF	470.742	325140CK2	CKB2/14	71	24	18	10	690.432	690.802	
	470.744	325140CK4	CKB4/22	71	39	23	15	690.434	690.804	
ER-50QF	470.752	325150CK2	CKB2/14	82	24	19	10	690.432	690.802	
	470.754	325150CK4	CKB4/22	82	39	24	15	690.434	690.804	

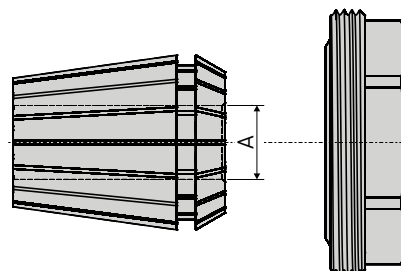
QuickFlex® Adapter

Sizes: ER-25QF, ER-32QF, ER-40QF and ER-50QF



Collets

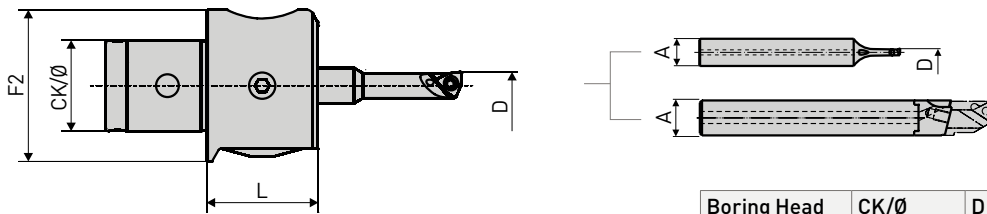
Sizes: ER25, ER32, ER40 and ER50



Tool combinations and work ranges

For detailed specifications of the boring tools and accessories please refer to the BIG KAISER main catalogue.

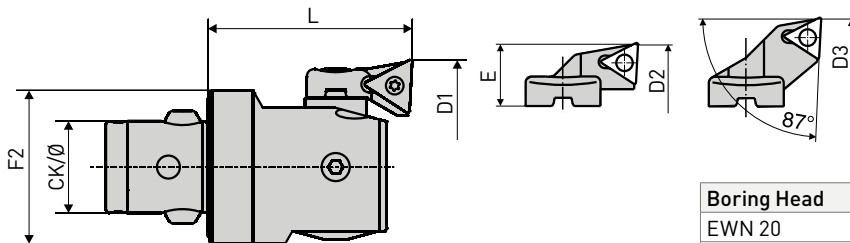
Precision boring heads EWN, Series 112, \varnothing 0.4 – 24.8 mm



Boring Head	CK/Ø	D	A	L	F2
EWN 04-15	CK3/18	0.4 - 15.5	7	22	31
EWN 04-22	CK4/22	0.4 - 24.8	10	28	39

See main catalogue page B51-55

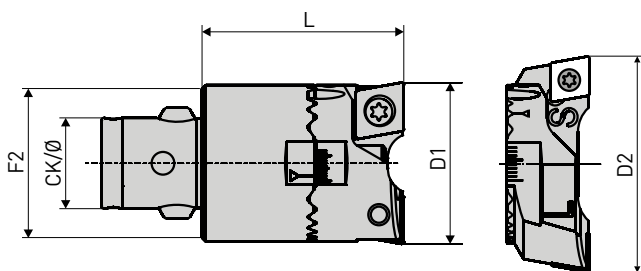
Precision boring heads EWN, Series 310, \varnothing 20 – 74 mm



Boring Head	CK/Ø	D1	D2	D3	L	F2
EWN 20	CKB1/11	20 - 26	25 - 31	30 - 36	32.5	19
EWN 25	CKB2/14	25 - 33	32 - 40	39 - 47	35.5	24
EWN 32	CKB3/18	32 - 42	41 - 51	50 - 60	40	31
EWN 41	CKB4/22	41 - 54	50 - 63	61 - 74	47	39

See main catalogue page B58-62

Rough boring heads SW, Series 319, \varnothing 20 – 66 mm



Boring Head	CK/Ø	D1	D2	L	F2
SW 20	CKB1/11	20 - 26	25 - 31	32.5	19
SW 25	CKB2/14	25 - 33	32 - 40	35.5	24
SW 32	CKB3/18	32 - 42	41 - 51	40	31
SW 41	CKB4/22	41 - 54	53 - 66	47	39

See main catalogue page B27-31

Precision boring heads EW, Series 310, \varnothing 15 – 22 mm



Boring Head	A	D	L
EW 15	14	15 - 18.5	30
EW 18	16	18 - 22	36

See main catalogue page B67

Application examples

The most advanced technologies on the market

Digital boring head with vibration damping Smart Damper.
EWD 41 SD x CKB4

Perfect roughing

Different roughing methods (balanced or stepped) without additional components and without length adjustment.
SW 25 x CKB2

Smallest bores, highly precise and fast

The smallest boring head world wide.
EWN 04-7 x CK1

Precision boring heads with thread connection

In combination with cylindrical shanks for universal tool clamping.
EW 15 x M6

Multi-functional, for highest precision and efficiency

With three insert holders for the extended boring range and for back boring.
EWN 25 x CKB2

Powerful due to optimized tool length for every application

Step less length adjustment of the boring bar.
EWN 04-22 x CK4

